



*SAtellite Near Real Time MOnitoring  
Network of the Eutrophication Risk for the marine waters over the  
Greek-Albanian crossborder area*

**Production of the specifications of the SDHMS**

*Stelios Bollanos  
Planetek Hellas*



IPA Cross-Border PROGRAMME  
**Greece - Albania**  
2007-2013

FROM NEIGHBOURHOOD TO PARTNERSHIP



ΕΛΛΗΝΙΚΗ ΔΗΜΟΚΡΑΤΙΑ

Αποκεντρωμένη Διοίκηση  
Ηπείρου - Δυτικής Μακεδονίας

The Programme is co-funded  
by the European Union  
and by National Funds  
of Greece & Albania



# Objectives of SAIMON

Using satellite images for monitoring the quality of marine coastal waters (*eutrophication*) in near real time.

→ Production of a Satellite Data Handling and Management System (SDHMS) that will provide satellite maps based on:

- a. Chlorofyll-a concentration ( $\mu\text{g/l}$ )
- b. Water Transparency (m)
- c. Sea Surface Temperature ( $^{\circ}\text{C}$ )

The output will be provided daily, every 10 days, and also mean monthly values will be provided, as well as P90 analysis at 1km



IPA Cross-Border PROGRAMME  
**Greece - Albania**  
2007-2013

FROM NEIGHBOURHOOD TO PARTNERSHIP

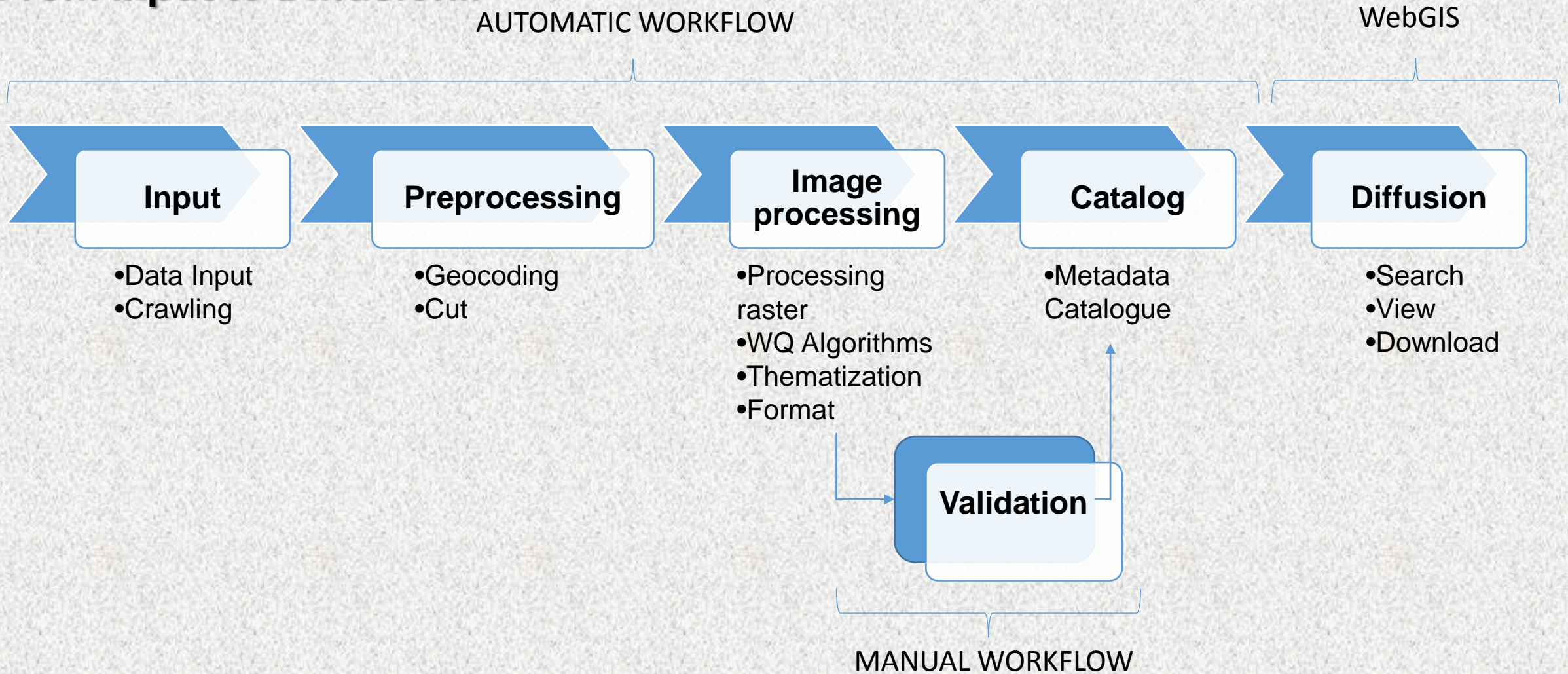


ΕΛΛΗΝΙΚΗ ΔΗΜΟΚΡΑΤΙΑ  
Αποκεντρωμένη Διοίκηση  
Ηπείρου - Δυτικής Μακεδονίας

The Programme is co-funded  
by the European Union  
and by National Funds  
of Greece & Albania



# From Input to Diffusion..



IPA Cross-Border PROGRAMME  
**Greece - Albania**  
2007-2013

FROM NEIGHBOURHOOD TO PARTNERSHIP

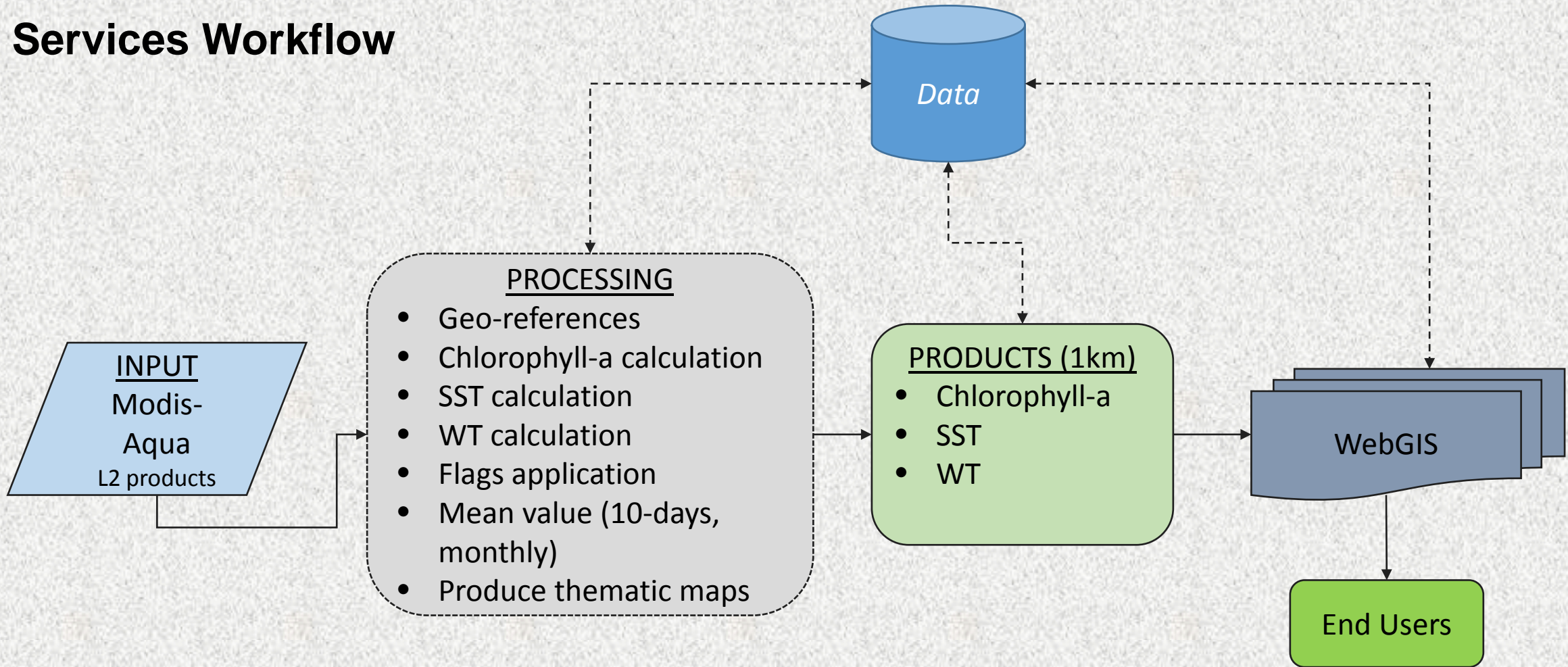


ΕΛΛΗΝΙΚΗ ΔΗΜΟΚΡΑΤΙΑ  
Αποκεντρωμένη Διοίκηση  
Ηπείρου - Δυτικής Μακεδονίας

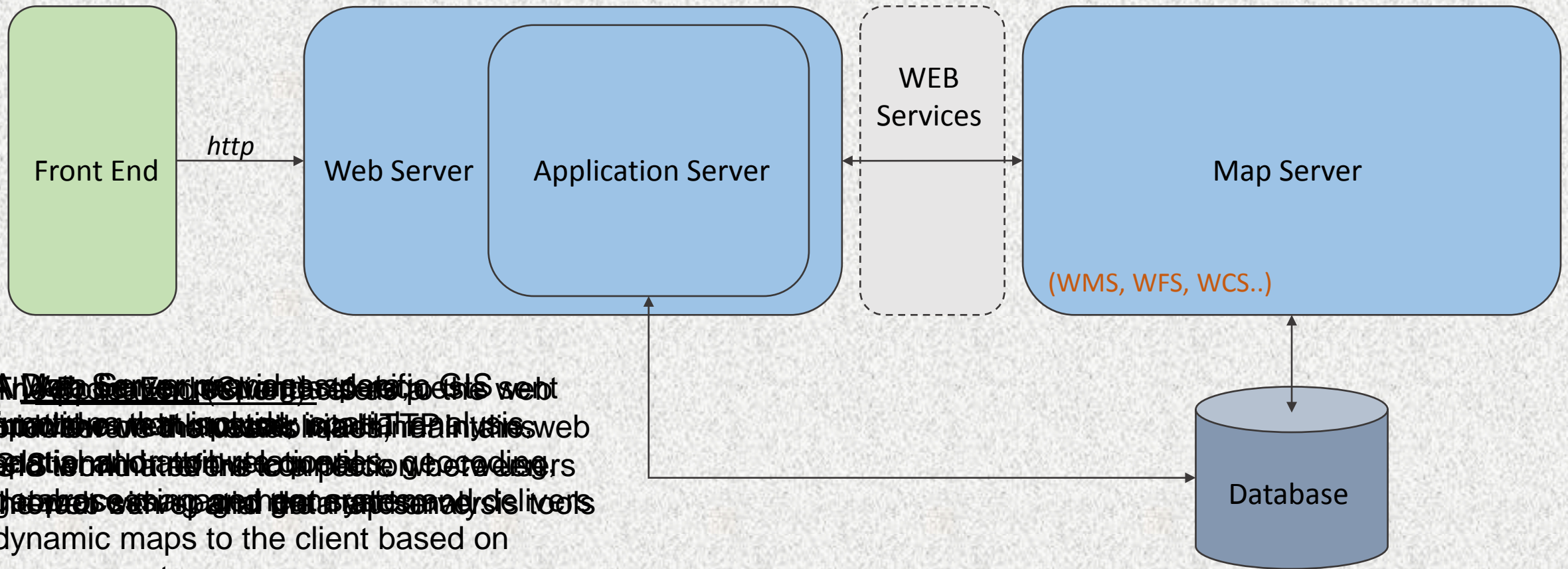
The Programme is co-funded  
by the European Union  
and by National Funds  
of Greece & Albania



# Services Workflow



# Abstract Architecture of the WebGIS



A Web Server (which provides the web front end) receives requests from the client and forwards them to the Application Server. The Application Server generates the maps and forwards them to the Map Server. The Map Server provides dynamic maps to the client based on user requests.



## OGC - Open Standards

- Catalog Service for the Web (CSW), exposes a catalogue of geospatial records in XML on the Internet (over HTTP), made up of records that describe geospatial data, geospatial services, and related resources.
- Web Map Service (WMS), provides a simple HTTP interface for requesting geo-registered map images from one or more distributed geospatial databases.
- Web Feature Service (WFS), offers access to geographic information at the feature and feature property level.
- Web Coverage Service (WCS), offers multi-dimensional coverage data representing space/time-varying phenomena that relate a spatio-temporal domain to a wide range of properties.



IPA Cross-Border PROGRAMME  
**Greece - Albania**  
2007-2013

FROM NEIGHBOURHOOD TO PARTNERSHIP



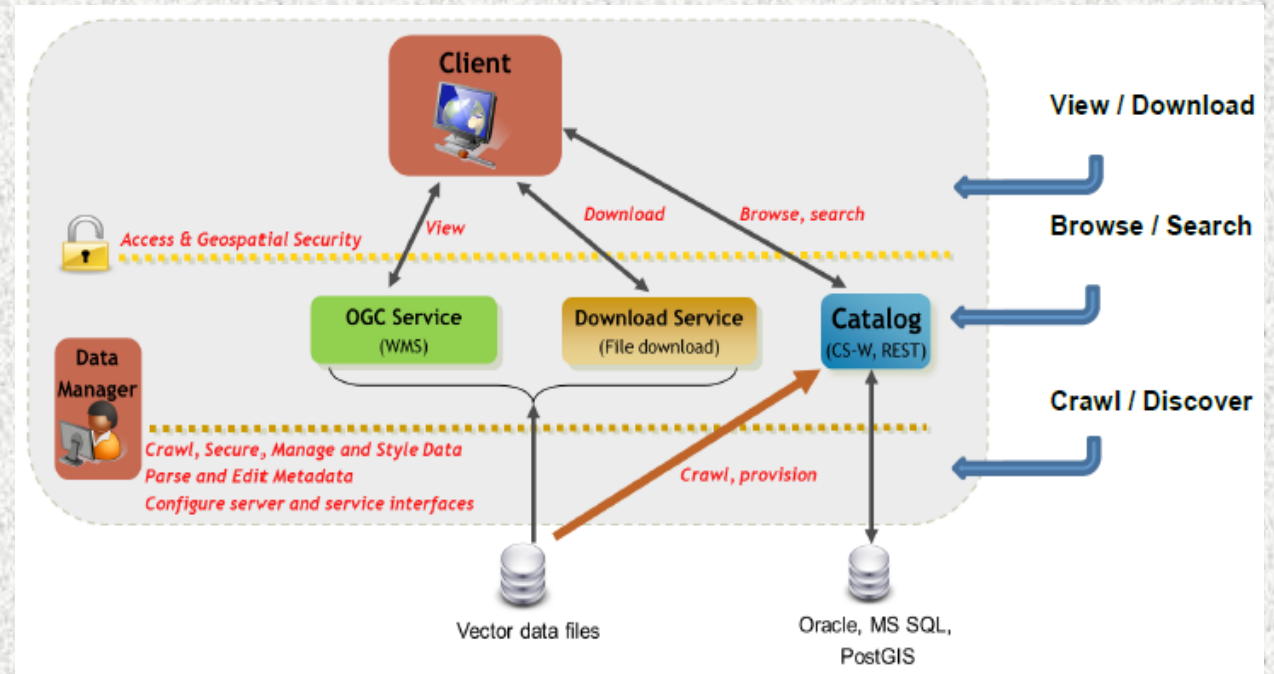
ΕΛΛΗΝΙΚΗ ΔΗΜΟΚΡΑΤΙΑ  
Αποκεντρωμένη Διοίκηση  
Ηπείρου - Δυτικής Μακεδονίας

The Programme is co-funded  
by the European Union  
and by National Funds  
of Greece & Albania



# Web Services – INSPIRE

- Discovery Service allows to search for spatial data, spatial data sets and network services based on corresponding metadata stored in data collection system. It is based on the open standard CSW 2.0.2 ISO Profile and has been developed in accordance with the specifications of the directive 2007/2/EU (INSPIRE).
- View Service allows the visualization of dynamic spatial data in the form of digital image files. It is based on the standard WMS 1.3.0 of OGC and it is compliant with the directive 2007/2/EU (INSPIRE).
- Download Service allows downloading spatial data. It is based on the standard WFS 2.0. that enables access to particular data and reach resources of spatial information.



IPA Cross-Border PROGRAMME  
Greece - Albania  
2007-2013

FROM NEIGHBOURHOOD TO PARTNERSHIP



ΕΛΛΗΝΙΚΗ ΔΗΜΟΚΡΑΤΙΑ  
Αποκεντρωμένη Διοίκηση  
Ηπείρου - Δυτικής Μακεδονίας

The Programme is co-funded  
by the European Union  
and by National Funds  
of Greece & Albania



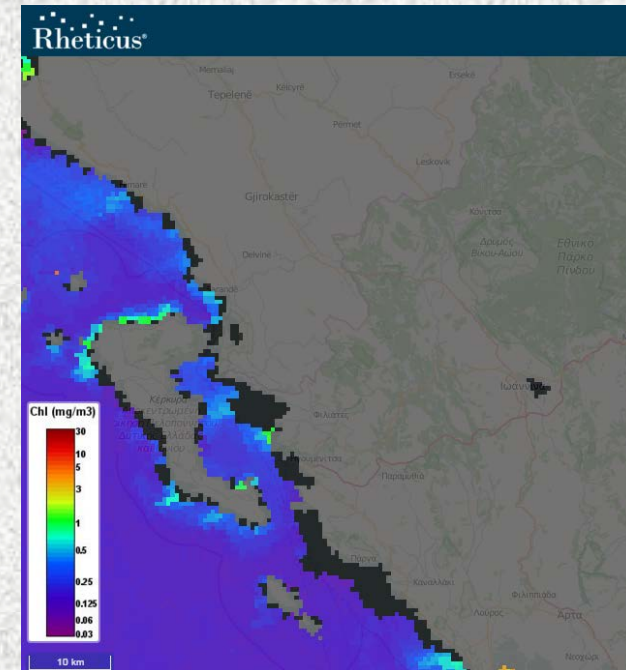
# Rheticus Platform #1

*Rheticus is a cloud-based data and services hub able to deliver Earth Observation added-value products through automatic complex processes*

Most relevant features of Rheticus are:

- Integration towards external data sources with strong emphasis for Open Data;
- Ability to calculate geospatial indicators generated as results of the knowledge about any given geographic area;
- Capacity to involve and coordinate back-office operators claimed to operate throughout the production workflow;
- Accessibility as Cloud service (Software As a Service - SaaS)

Rheticus®



IPA Cross-Border PROGRAMME  
Greece - Albania  
2007-2013

FROM NEIGHBOURHOOD TO PARTNERSHIP



ΕΛΛΗΝΙΚΗ ΔΗΜΟΚΡΑΤΙΑ  
Αποκεντρωμένη Διοίκηση  
Ηπείρου - Δυτικής Μακεδονίας

The Programme is co-funded  
by the European Union  
and by National Funds  
of Greece & Albania





## Rheticus Platform #2

Finally, Rheticus:

- Is a system based on a geographical content management system (GeoCMS)
- Provides an interface of WebGIS for the consultation of the data/maps
- Provides data via Web Services
- Is a cloud based platform and it provides all the functionalities using the technology “Software as a Service”



IPA Cross-Border PROGRAMME  
**Greece - Albania**  
2007-2013

FROM NEIGHBOURHOOD TO PARTNERSHIP



ΕΛΛΗΝΙΚΗ ΔΗΜΟΚΡΑΤΙΑ

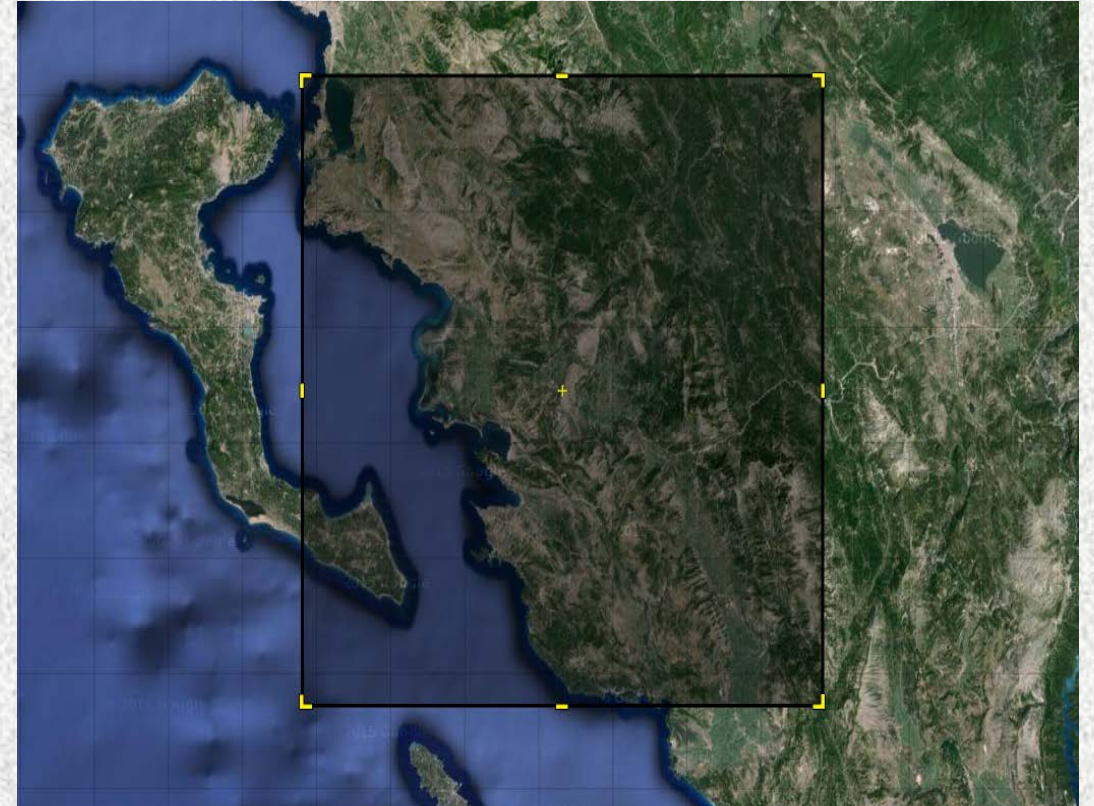
Αποκεντρωμένη Διοίκηση  
Ηπείρου - Δυτικής Μακεδονίας

The Programme is co-funded  
by the European Union  
and by National Funds  
of Greece & Albania



# Navigation

- The WebGIS will be responsible for the delivery and the visualization of geographic layers and related data, through a viewer.
- The system will support English, Greek and Albanian languages.
- It is based on a Content Management System capable of managing geographic information and divided into 2 sub systems:
  - Administration Console: Managing the settings of the overall system
  - Web client: Description, search, visualization, discovery and download data



IPA Cross-Border PROGRAMME  
**Greece - Albania**  
2007-2013

FROM NEIGHBOURHOOD TO PARTNERSHIP



ΕΛΛΗΝΙΚΗ ΔΗΜΟΚΡΑΤΙΑ  
Αποκεντρωμένη Διοίκηση  
Ηπείρου - Δυτικής Μακεδονίας

The Programme is co-funded  
by the European Union  
and by National Funds  
of Greece & Albania

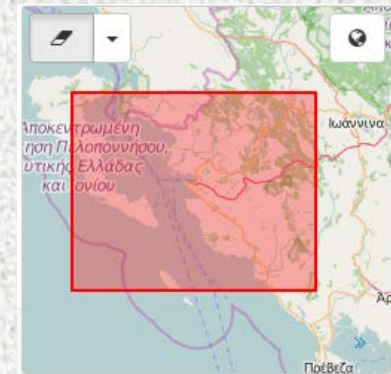
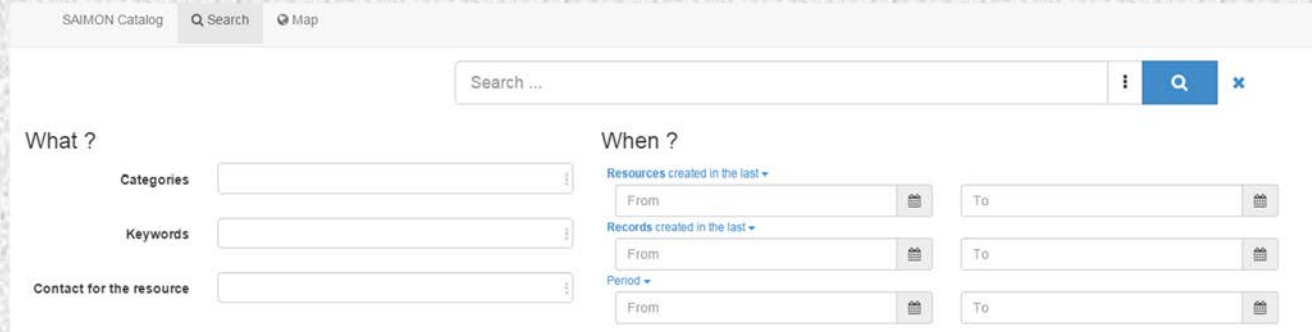


# Search

The WebGIS includes a search form allowing users to display search results on the map.

The user can combine the following Search criteria :

- alphanumeric criteria, by identifying text or keywords,
- temporal criteria for the selection of the time period (from → to) , and
- geographical criteria , by designing the area of interest directly on the map



IPA Cross-Border PROGRAMME  
**Greece - Albania**  
2007-2013

FROM NEIGHBOURHOOD TO PARTNERSHIP



ΕΛΛΗΝΙΚΗ ΔΗΜΟΚΡΑΤΙΑ  
Αποκεντρωμένη Διοίκηση  
Ηπείρου - Δυτικής Μακεδονίας

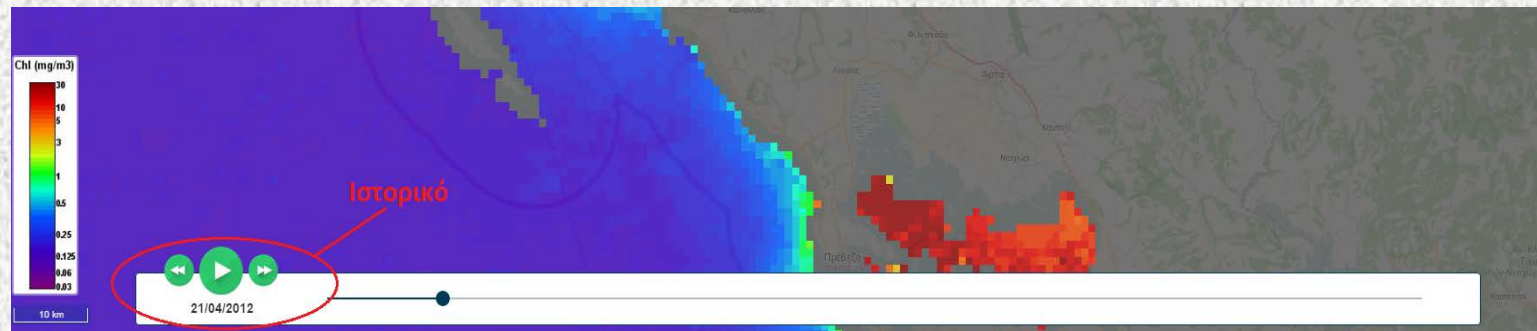
The Programme is co-funded  
by the European Union  
and by National Funds  
of Greece & Albania



# History

The WebGIS allows the user to browse maps for different points of time covering the same area. This enables the user to discover when a phenomenon changes. In the image below the slider and the Historical control buttons:

1. The user activates the tab "Time" in the toolbox
2. Using the slider bar or a date, the user can select the time period for which he is interested.
3. Using the control buttons the user can see the time change of the selected period.



IPA Cross-Border PROGRAMME  
**Greece - Albania**  
2007-2013

FROM NEIGHBOURHOOD TO PARTNERSHIP



ΕΛΛΗΝΙΚΗ ΔΗΜΟΚΡΑΤΙΑ  
Αποκεντρωμένη Διοίκηση  
Ηπείρου - Δυτικής Μακεδονίας

The Programme is co-funded  
by the European Union  
and by National Funds  
of Greece & Albania



# Administration Panel

The system is equipped with a private section that guarantees administrators the maintenance, management and updating of the information published. Once connected , the system will display an index of the various segments of management:

- User profiles
- Security
- Scheduling
- Editing and updating Metadata



IPA Cross-Border PROGRAMME  
**Greece - Albania**  
2007-2013

FROM NEIGHBOURHOOD TO PARTNERSHIP



ΕΛΛΗΝΙΚΗ ΔΗΜΟΚΡΑΤΙΑ

Αποκεντρωμένη Διοίκηση  
Ηπείρου - Δυτικής Μακεδονίας

The Programme is co-funded  
by the European Union  
and by National Funds  
of Greece & Albania



# LIVE DEMO

<http://kim.planetek.it:8080/marine/#/>



IPA Cross-Border PROGRAMME  
**Greece - Albania**  
2007-2013

FROM NEIGHBOURHOOD TO PARTNERSHIP



ΕΛΛΗΝΙΚΗ ΔΗΜΟΚΡΑΤΙΑ

Αποκεντρωμένη Διοίκηση  
Ηπείρου - Δυτικής Μακεδονίας

The Programme is co-funded  
by the European Union  
and by National Funds  
of Greece & Albania



# The End



IPA Cross-Border PROGRAMME  
**Greece - Albania**  
**2007-2013**

FROM NEIGHBOURHOOD TO PARTNERSHIP



ΕΛΛΗΝΙΚΗ ΔΗΜΟΚΡΑΤΙΑ

Αποκεντρωμένη Διοίκηση  
Ηπείρου - Δυτικής Μακεδονίας

The Programme is co-funded  
by the European Union  
and by National Funds  
of Greece & Albania

